

LARRY E. LANGSTON & ASSOCIATES

CONSULTING ENGINEERING AND LAND SURVEYING

P. O. Box 754
GATESVILLE, TEXAS 76528

Field Notes

All that certain land situated in Hamilton County, Texas and being a part of the L.W. Sheldon Survey, A-437, and the John P. Wyatt Survey, A-858. Also being a part of a 2,335.7 acre tract conveyed by Edith Bywaters, et al, to Bywaters Hereford Ranch, Inc. by deed dated Dec. 30, 1947 and recorded in Book 142, PG. 174 of the Hamilton County Deed Records.

Beginning at a steel pin at a corner post in the west line of the A. J. Mahan Survey, a northeast corner of the L.W. Sheldon Survey, and the most northerly northeast corner this. Said beginning also being a corner of the above described 2,335.7 acre tract.

Thence with a fenceline, an east line of said Sheldon Survey; S17°47'30"W, 317.1 ft. to a steel pin at a corner post, an ell corner of said Sheidoh Survey.

Thence with said fenceline and the south line of said Mahan Survey S71°57'E, 1181.2 ft. to a steel pin at a corner post in said Mahan Survey south line.

Thence leaving said survey line and continuing along a fenceline, S32°20'W, crossing the south line of said Sheldon Survey, in all a distance of 1972.0 ft. to a steel pin in said fenceline.

Thence leaving said fenceline N69°45'W, 2170.6 ft. to a steel pin and N06°47'W, crossing the south line of said Sheldon Survey, in all a distance of 2296.5 ft. to a steel pin in the south right of way line of State Hwy. No. 22.

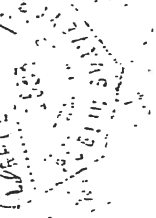
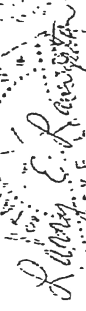
Thence with said right of way line N78°46'E, 151.5 ft. to a concrete right of way monument and S76°54'E, 36.8 ft. to a concrete right of way monument in the north line of said Sheldon Survey.

Thence leaving said right of way line and continuing along a fence-line, the north line of said Sheldon Survey, S71°13'E, 802.2 ft. and S71°42'30"E, 1466.3 ft. to the place of beginning and containing 139.15 acres of land.

Of the above described 139.15 acres, approx. 50.83 acres lay in said Sheldon Survey and 88.32 acres lay in said Wyatt Survey.

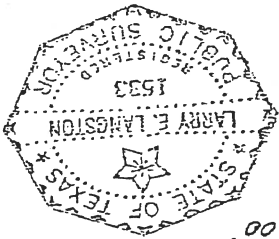
I, Larry E. Langston, Registered Public Surveyor of Coryell County, Texas do hereby certify that the foregoing survey was done by me on the ground and that it is true and correct to the best of my knowledge and belief.

This 26th day of September, 1978

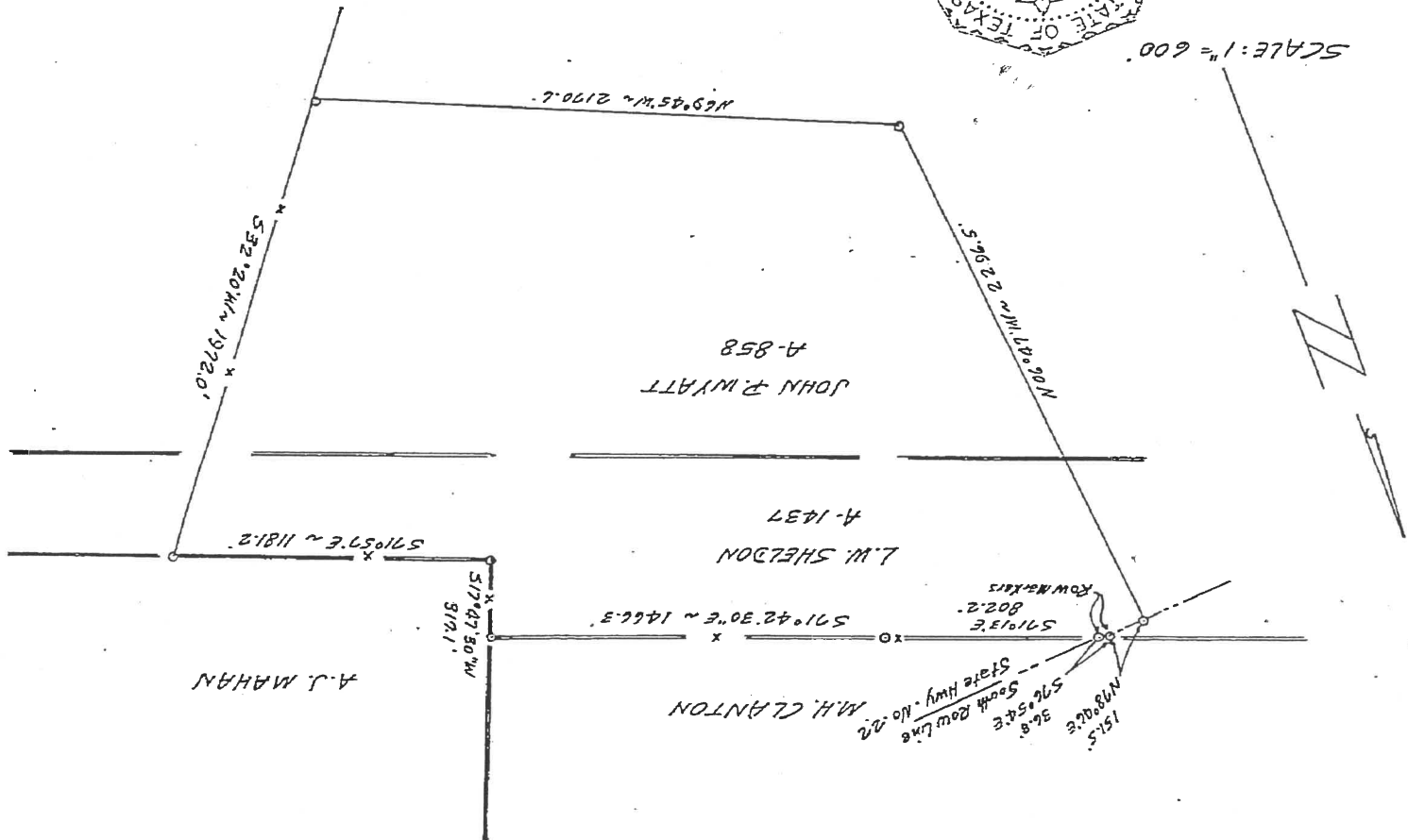


Filed for record October 25, 1978 at 2:05 p.m.
Recorded October 30, 1978 at 2:30 p.m.

Earline Jones County Clerk
Hamilton County, Texas



SCALE: 1" = 600'



PLAT SHOWING SURVEY OF 139.15 ACRES, A PART OF THE L.W. SHELDON AND JOHN F. WYATT SURVEYS, SITUATED IN HAMILTON COUNTY, TEXAS