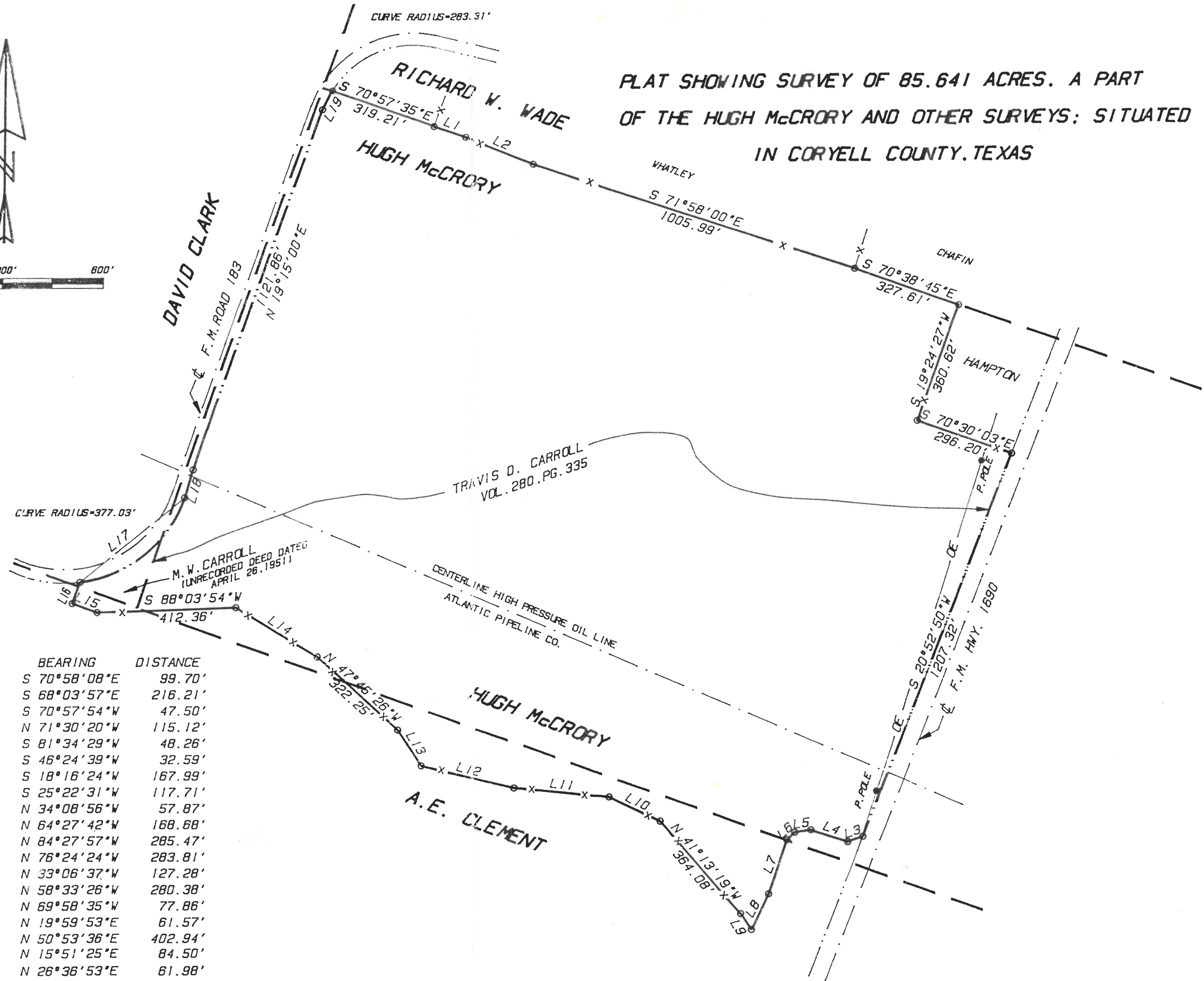
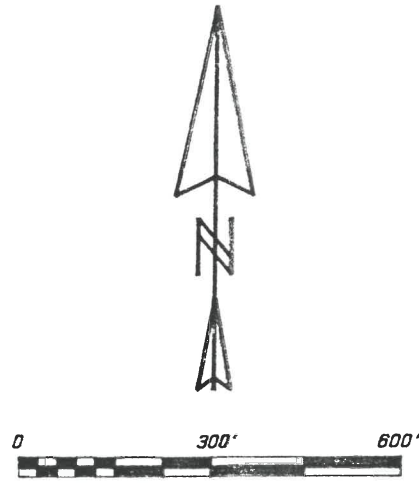


PLAT SHOWING SURVEY OF 85.641 ACRES. A PART
OF THE HUGH McCRORY AND OTHER SURVEYS; SITUATED
IN CORYELL COUNTY, TEXAS



LINE	BEARING	DISTANCE
L 1	S 70°58'08"E	99.70'
L 2	S 68°03'57"E	216.21'
L 3	S 70°57'54"W	47.50'
L 4	N 71°30'20"W	115.12'
L 5	S 81°34'29"W	48.26'
L 6	S 46°24'39"W	32.59'
L 7	S 18°16'24"W	167.99'
L 8	S 25°22'31"W	117.71'
L 9	N 34°08'56"W	57.87'
L 10	N 64°27'42"W	168.68'
L 11	N 84°27'57"W	285.47'
L 12	N 76°24'24"W	283.81'
L 13	N 33°06'37"W	127.28'
L 14	N 58°33'26"W	280.38'
L 15	N 69°58'35"W	77.86'
L 16	N 19°59'53"E	61.57'
L 17	N 50°53'36"E	402.94'
L 18	N 15°51'25"E	84.50'
L 19	N 26°36'53"E	61.98'