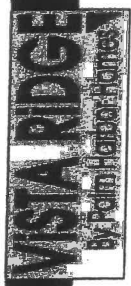
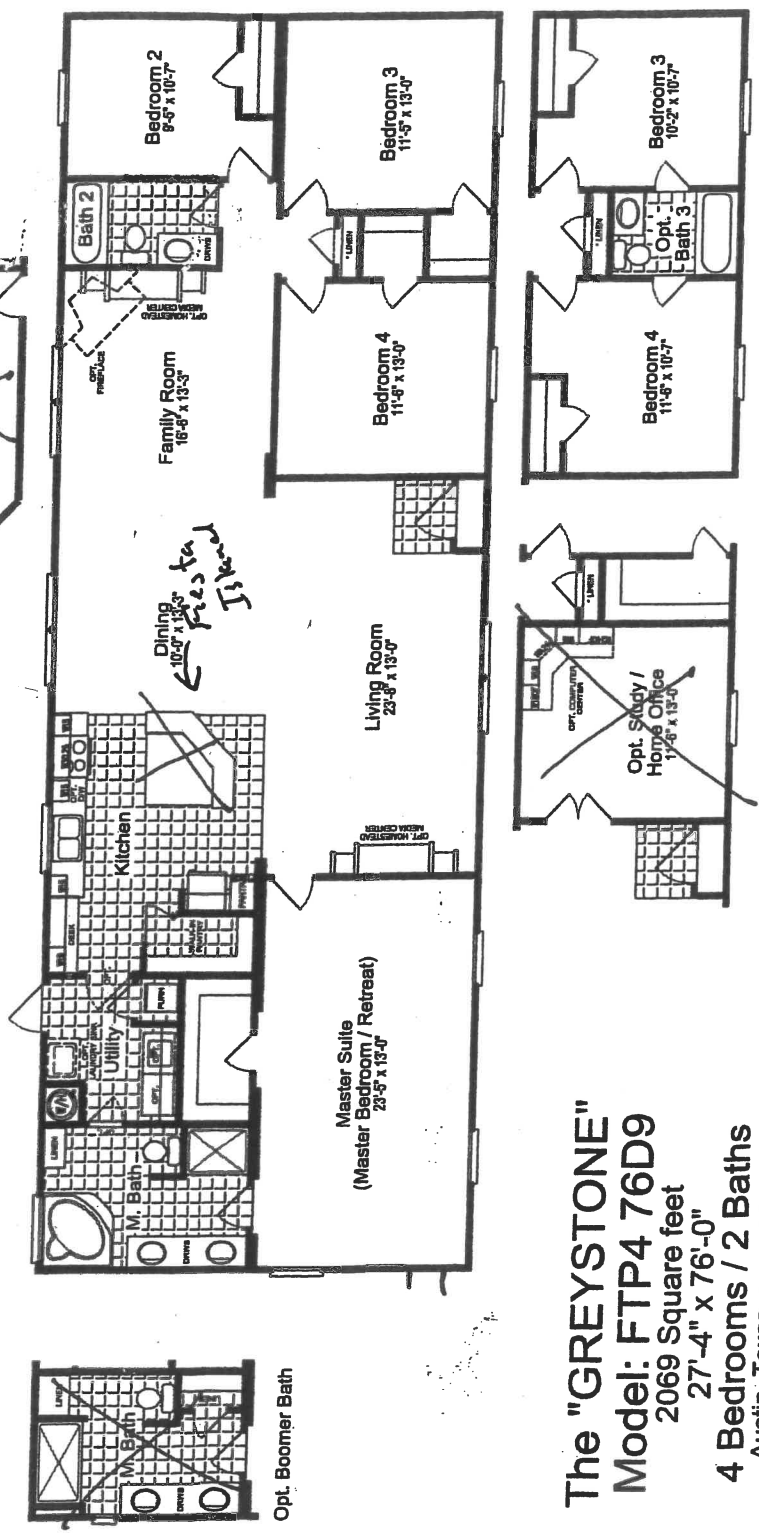


6/7/14

X Mike Samms Yant



NOTE: (*LINEN) = ON MODULAR ONLY
LINEN BECOMES PLENUM
FOR OH DUCT OPT.



The "GREYSTONE"

Model: FTP4 76D9
2069 Square feet
27'-4" x 76'-0"
4 Bedrooms / 2 Baths
Austin, Texas Date: 09/22/2014

Copyright © 2014 by Palm Harbor Homes, Inc.
All Rights Reserved.

Because Palm Harbor Homes use a continuous product updating and improvement process, specifications are subject to change without notice or obligation. Likewise, the floor plan shown is representative only and may vary from the actual home. Square footage calculations are based on nominal widths and all room dimensions are approximate subject to industry standards. R-values may vary in compressed areas. Some transportation components may have been recycled after close inspection for safety and appearance.

Key Features:

- * Quick-Step Kitchen
- * Walk-in Kitchen Pantry
- * Grande Island w/ Serving Bar
- * Drawers in Guest Bath
- * Walk-in Closet - Mbr, Bdrms 3 & Bdrms 4
- * 6-Door Linen Cabinet - Master Bath
- * Huge Master Suite

