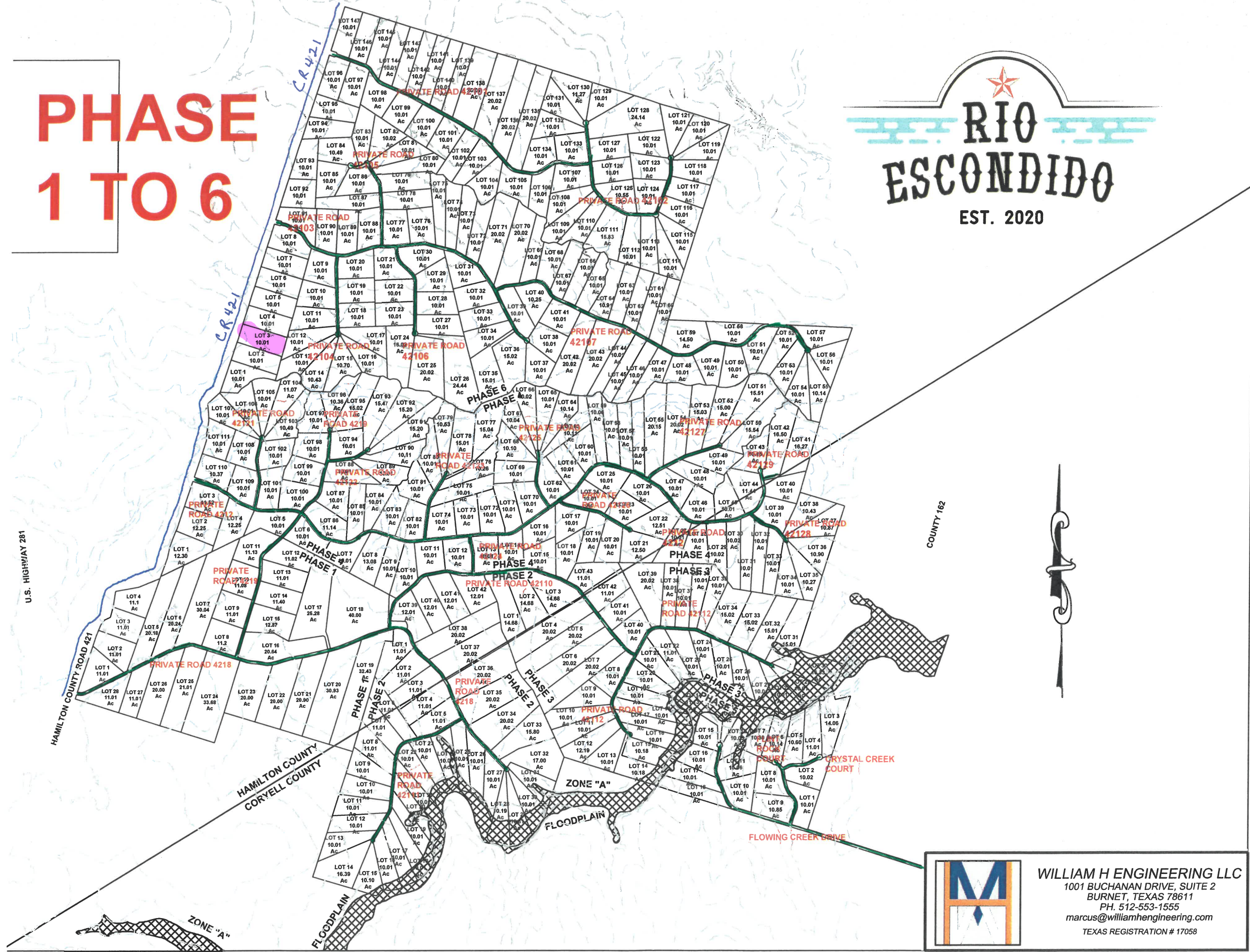


# PHASE 1 TO 6

# RIO ESCONDIDO

EST. 2020



COUNTY 162

U.S. HIGHWAY 281

HAMILTON COUNTY ROAD 421

HAMILTON COUNTY CORYELL COUNTY

FLOODPLAIN

FLOWING CREEK DRIVE

CRYSTAL CREEK COURT



**WILLIAM H ENGINEERING LLC**  
1001 BUCHANAN DRIVE, SUITE 2  
BURNET, TEXAS 78611  
PH. 512-553-1555  
marcus@williamhengineering.com  
TEXAS REGISTRATION # 17058