

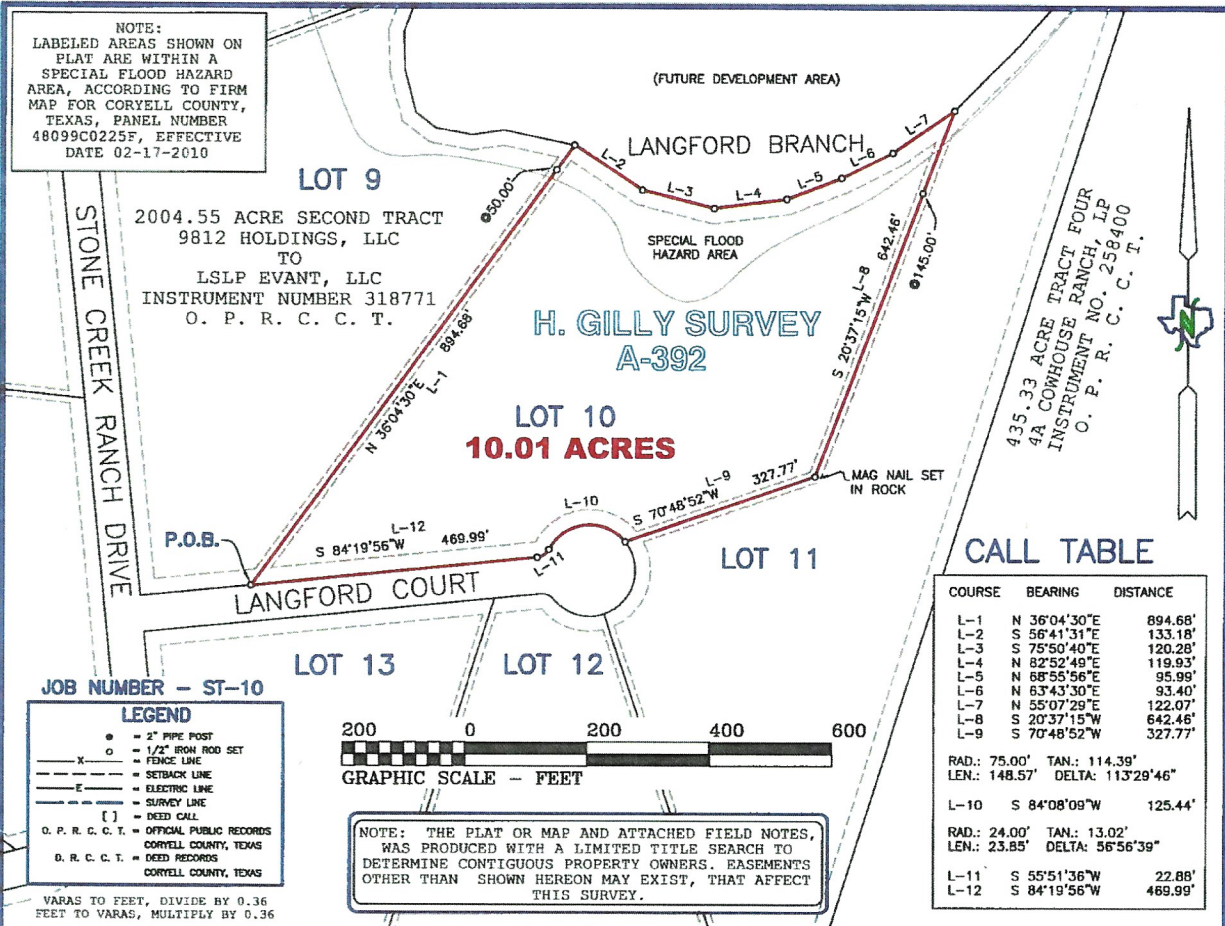
HUDDLESTON SURVEYING & MAPPING P.C.

107 S. PAGE, PO BOX 39, COMANCHE, TEXAS 76442

325-356-2267 OFFICE, 325-356-2903 FAX

T.B.P.L.S. FIRM NUMBER 10033700

shsurveyor@verizon.net



**THE STATE OF TEXAS:
 COUNTY OF CORYELL:**

Being 10.01 acres of land, situated in Coryell County, Texas, out of the H. GILLY SURVEY, ABSTRACT NUMBER 392, and being out of a 2004.55 acre Second Tract, that is described in a deed from 9812 Holdings, LLC, to LSLP Evant, LLC, recorded in Instrument Number 318771, Official Public Records of Coryell County, Texas, and further described as follows;

BEGINNING, at a 1/2 inch iron rod set in the North line of Langford Court, from which the Southwest corner of said 2004.55 acre tract bears, S 53° 27' 10" W 3624.69 feet, for the Southwest corner of this tract;

THENCE, N 36° 04' 30" E 894.68 feet, to a point in the approximate center of Langford Branch, from which a reference 1/2 inch iron rod set bears, S 36° 04' 30" W 50.00 feet, for the Northwest corner of this tract;

THENCE, with the approximate center of Langford Branch, as follows, S 56° 41' 31" E 133.18 feet, to a point, S 75° 50' 40" E 120.28 feet, to a point, N 82° 52' 49" E 119.93 feet, to a point, N 68° 55' 56" E 95.99 feet, to a point, N 63° 43' 30" E 93.40 feet, to a point, and N 55° 07' 29" E 122.07 feet, to a point, from which a reference 1/2 inch iron rod set bears, S 20° 37' 15" W 145.00 feet, for the Northeast corner of this tract;

THENCE, S 20° 37' 15" W 642.46 feet, to a mag nail set, in rock, for the Southeast corner of this tract;

THENCE, S 70° 48' 52" W 327.77, to a 1/2 inch iron rod set in the cul de sac of the North line of Langford Branch, for a corner of this tract;

THENCE, with the North line of Langford Court, as follows, along a curve to the left having a radius of 75.00 feet and an arc length of 148.57 feet, and being subtended by a chord of S 84° 08' 09" W 125.44 feet, to a 1/2 inch iron rod set, along a curve to the right having a radius of 24.00 feet and an arc length of 23.85 feet, and being subtended by a chord of S 55° 51' 36" W 22.88 feet, to a 1/2 inch iron rod set, and S 84° 19' 56" W 469.99 feet, to the point of beginning and containing 10.01 acres of land.

I, SCOTT HUDDLESTON, a Registered Professional Land Surveyor in the State of Texas, do hereby certify that the foregoing Field Notes and Plat, was prepared from an actual survey, made on the ground, on May 14, 2020, from the Official Public Records of Coryell County, Texas, surveys of area properties, that the corners and boundaries with marks natural and artificial are just as were found on the ground.

Bearings are based on True North as determined by GPS survey data (NAD 83).

WITNESS MY HAND AND SEAL THIS THE 22nd DAY OF MAY, 2020.

Scott Huddleston
 SCOTT HUDDLESTON
 REGISTERED PROFESSIONAL LAND SURVEYOR, NO. 6334 OF TEXAS.

