

Exhibit "A"

PFINGSTEN SURVEYORS, P.C.

107 S. PAGE, PO BOX 39, COMANCHE, TEXAS 76442
 325-356-2267 OFFICE, 325-356-2903 FAX
 T.B.P.L.S. FIRM NUMBER 10033700
 shsurveyor@verizon.net

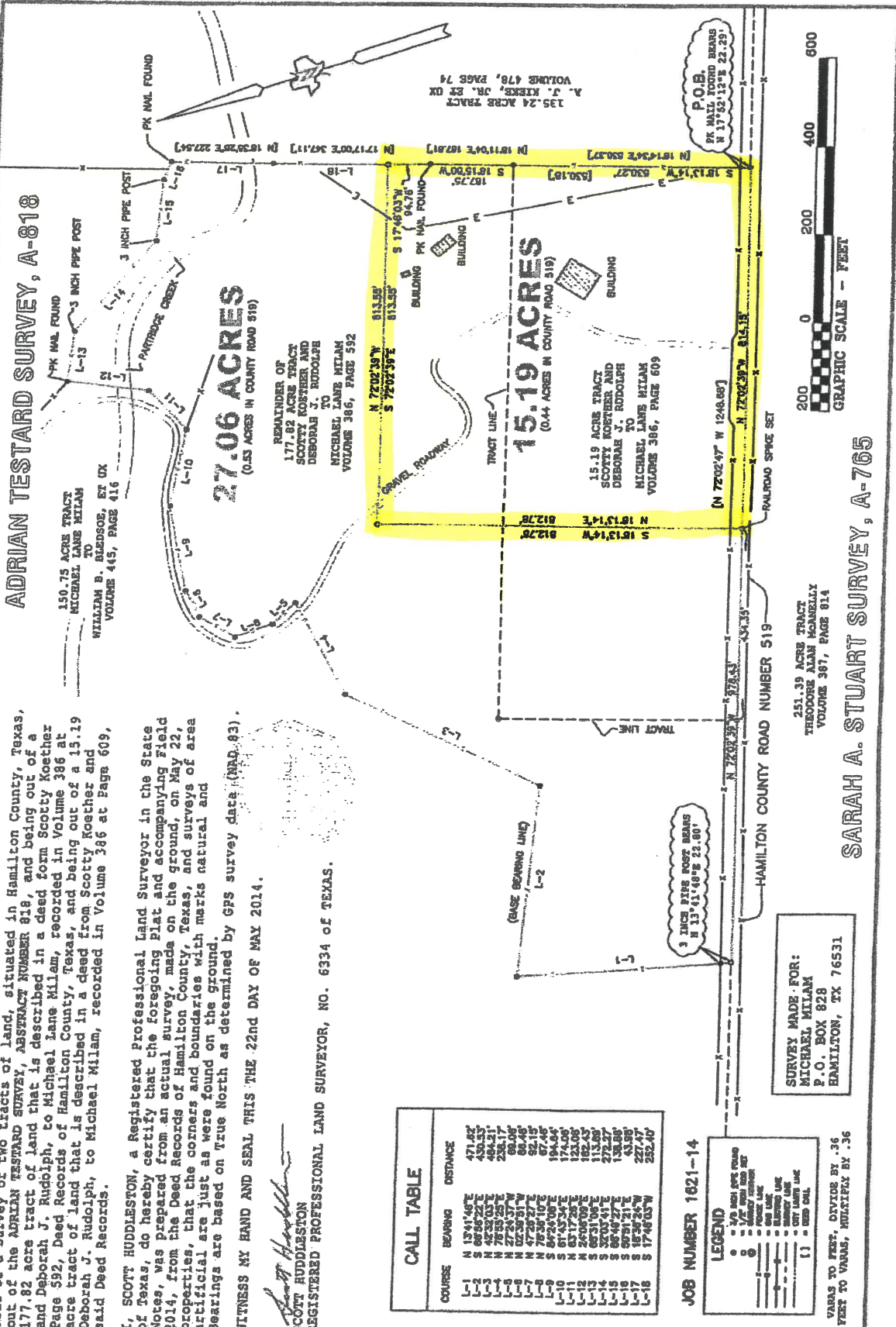
ADRIAN TESTARD SURVEY, A-818

THE STATE OF TEXAS:
 COUNTY OF HAMILTON:
 Plat of a survey of two tracts of land, situated in Hamilton County, Texas, out of the ADRIAN TESTARD SURVEY, ABSTRACT NUMBER 818, and being out of a 177.82 acre tract of land that is described in a deed from Scotty Koether and Deborah J. Rudolph, to Michael Lane Milam, recorded in Volume 386 at Page 592, Deed Records of Hamilton County, Texas, and being out of a 15.19 acre tract of land that is described in a deed from Scotty Koether and Deborah J. Rudolph, to Michael Milam, recorded in Volume 386 at Page 609, said Deed Records.

I, SCOTT HUDDLESTON, a Registered Professional Land Surveyor in the State of Texas, do hereby certify that the foregoing Plat and accompanying Field Notes, was prepared from an actual survey, made on the ground, on May 22, 2014, from the Deed Records of Hamilton County, Texas, and surveys of area properties, that the corners and boundaries with marks natural and artificial are just as were found on the ground.
 Bearings are based on True North as determined by GPS survey data (NAD 83).

WITNESS MY HAND AND SEAL THIS THE 22nd DAY OF MAY 2014.

Scott Huddleston
 SCOTT HUDDLESTON
 REGISTERED PROFESSIONAL LAND SURVEYOR, NO. 6334 OF TEXAS.



CALL TABLE

| COURSE | BEARING | DISTANCE |
|--------|--------------|----------|
| L-1 | N 19°41'46"E | 471.82 |
| L-2 | N 42°05'22"E | 430.33 |
| L-3 | N 78°53'25"E | 284.21 |
| L-4 | N 78°53'25"E | 284.21 |
| L-5 | N 27°34'31"W | 80.00 |
| L-6 | N 02°30'31"W | 80.00 |
| L-7 | N 47°29'27"E | 82.15 |
| L-8 | S 67°35'10"E | 67.46 |
| L-9 | S 67°35'10"E | 67.46 |
| L-10 | N 19°41'46"E | 194.64 |
| L-11 | N 61°43'34"E | 123.00 |
| L-12 | S 61°17'28"E | 182.45 |
| L-13 | S 62°31'06"E | 113.80 |
| L-14 | S 32°05'01"E | 272.27 |
| L-15 | S 68°40'27"E | 138.86 |
| L-16 | S 18°21'21"W | 43.95 |
| L-17 | S 18°21'21"W | 43.95 |
| L-18 | S 17°48'03"W | 252.40 |

LEGEND
 ○ 1/2 inch iron pipe post
 ○ 3/4 inch iron pipe post
 ○ 1 inch iron pipe post
 ○ 2 inch iron pipe post
 ○ 3 inch iron pipe post
 ○ 4 inch iron pipe post
 ○ 5 inch iron pipe post
 ○ 6 inch iron pipe post
 ○ 7 inch iron pipe post
 ○ 8 inch iron pipe post
 ○ 9 inch iron pipe post
 ○ 10 inch iron pipe post
 ○ 11 inch iron pipe post
 ○ 12 inch iron pipe post
 ○ 13 inch iron pipe post
 ○ 14 inch iron pipe post
 ○ 15 inch iron pipe post
 ○ 16 inch iron pipe post
 ○ 17 inch iron pipe post
 ○ 18 inch iron pipe post
 ○ 19 inch iron pipe post
 ○ 20 inch iron pipe post
 ○ 21 inch iron pipe post
 ○ 22 inch iron pipe post
 ○ 23 inch iron pipe post
 ○ 24 inch iron pipe post
 ○ 25 inch iron pipe post
 ○ 26 inch iron pipe post
 ○ 27 inch iron pipe post
 ○ 28 inch iron pipe post
 ○ 29 inch iron pipe post
 ○ 30 inch iron pipe post
 ○ 31 inch iron pipe post
 ○ 32 inch iron pipe post
 ○ 33 inch iron pipe post
 ○ 34 inch iron pipe post
 ○ 35 inch iron pipe post
 ○ 36 inch iron pipe post
 ○ 37 inch iron pipe post
 ○ 38 inch iron pipe post
 ○ 39 inch iron pipe post
 ○ 40 inch iron pipe post
 ○ 41 inch iron pipe post
 ○ 42 inch iron pipe post
 ○ 43 inch iron pipe post
 ○ 44 inch iron pipe post
 ○ 45 inch iron pipe post
 ○ 46 inch iron pipe post
 ○ 47 inch iron pipe post
 ○ 48 inch iron pipe post
 ○ 49 inch iron pipe post
 ○ 50 inch iron pipe post
 ○ 51 inch iron pipe post
 ○ 52 inch iron pipe post
 ○ 53 inch iron pipe post
 ○ 54 inch iron pipe post
 ○ 55 inch iron pipe post
 ○ 56 inch iron pipe post
 ○ 57 inch iron pipe post
 ○ 58 inch iron pipe post
 ○ 59 inch iron pipe post
 ○ 60 inch iron pipe post
 ○ 61 inch iron pipe post
 ○ 62 inch iron pipe post
 ○ 63 inch iron pipe post
 ○ 64 inch iron pipe post
 ○ 65 inch iron pipe post
 ○ 66 inch iron pipe post
 ○ 67 inch iron pipe post
 ○ 68 inch iron pipe post
 ○ 69 inch iron pipe post
 ○ 70 inch iron pipe post
 ○ 71 inch iron pipe post
 ○ 72 inch iron pipe post
 ○ 73 inch iron pipe post
 ○ 74 inch iron pipe post
 ○ 75 inch iron pipe post
 ○ 76 inch iron pipe post
 ○ 77 inch iron pipe post
 ○ 78 inch iron pipe post
 ○ 79 inch iron pipe post
 ○ 80 inch iron pipe post
 ○ 81 inch iron pipe post
 ○ 82 inch iron pipe post
 ○ 83 inch iron pipe post
 ○ 84 inch iron pipe post
 ○ 85 inch iron pipe post
 ○ 86 inch iron pipe post
 ○ 87 inch iron pipe post
 ○ 88 inch iron pipe post
 ○ 89 inch iron pipe post
 ○ 90 inch iron pipe post
 ○ 91 inch iron pipe post
 ○ 92 inch iron pipe post
 ○ 93 inch iron pipe post
 ○ 94 inch iron pipe post
 ○ 95 inch iron pipe post
 ○ 96 inch iron pipe post
 ○ 97 inch iron pipe post
 ○ 98 inch iron pipe post
 ○ 99 inch iron pipe post
 ○ 100 inch iron pipe post

JOB NUMBER 1621-14
 SURVEY MADE FOR:
 MICHAEL MILAM
 P.O. BOX 828
 HAMILTON, TX 76531
 VARAS TO FEET, DIVIDE BY .36
 FEET TO VARAS, MULTIPLY BY .36

SARAH A. STUART SURVEY, A-765



GRAPHIC SCALE - FEET

251.39 ACRE TRACT
 THEODORE ALAN MARBLEY
 VOLUME 387, PAGE 814
 135.24 ACRE TRACT
 A. J. KIERS, CR. ET UX
 VOLUME 478, PAGE 74
 15.19 ACRE TRACT
 SCOTTY KOETHER AND
 DEBORAH J. RUDOLPH
 MICHAEL LANE MILAM
 VOLUME 386, PAGE 609
 15.19 ACRES
 (0.44 ACRES IN COUNTY ROAD 519)
 27.06 ACRES
 (0.53 ACRES IN COUNTY ROAD 519)
 150.75 ACRE TRACT
 MICHAEL LANE MILAM
 WILLIAM B. BLADSOE, ET UX
 VOLUME 415, PAGE 416
 177.82 ACRE TRACT
 SCOTTY KOETHER AND
 DEBORAH J. RUDOLPH
 MICHAEL LANE MILAM
 VOLUME 386, PAGE 592
 3 INCH PIPE POST BEARS
 N 13°41'46"E 22.80'
 3 INCH PIPE POST BEARS
 N 17°48'03"W 22.20'
 3 INCH PIPE POST BEARS
 N 17°48'03"W 22.20'
 3 INCH PIPE POST BEARS
 N 17°48'03"W 22.20'